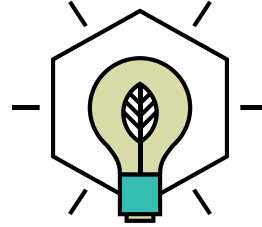


ACTIVE CHILLED BEAMS

HACB20 (2 WAY)



BUILT ON INNOVATION



THE HOSPITAL ROOM SOLUTION HACB20 is equipped with two vertical coils with ASHRAE 62 compliant integral drain pans. A Merv 8 Filter delivering superior indoor environment quality and air change effectiveness in both perimeter and interior zones.

PRODUCT DATA AND PERFORMANCE

Primary Airflow 5 to 40 CFM/LF @ Static pressure range of 0.2" - 0.7"WG

Secondary Chilled Water 0.5 - 2.4 GPM

Performance Range 500 - 1800 BTUH/LF.

Discharge 2- way

Coil Vertical 2 or 4 pipe option with drain pans and sweat or NPT fittings

Primary air connection Side or top entry as standard

Sizes 2' (Half tile) 4' (Full tile) 6' (One and a half tile)

COMMON APPLICATIONS

The traditional perforated faced HACB20 is designed for patient hospital rooms and typically suit T-Bar ceiling, dry wall/plaster and other types as required. A MERV 8 filter for re-circulated room air is standard. In the primary air plenum, closed cell insulation or alternately an internal sheet metal liner providing double wall construction is available. In either case, no fibrous materials are in contact with the air stream.

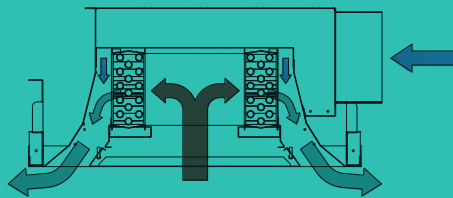




PERFORMANCE CHARACTERISTICS

SIZE	Height	TYPICAL CAPACITY		Primary Airflow (CFM)	SOUND LEVEL
		Cooling (BTUH)	Heating (BTUH)		
24"	11.3"	1,500 - 10,000	12,000	15 - 180	NC15-NC30

CEILING MOUNTED ACB CASSETTE
(VERTICAL COILS AND DRAIN PANS)



Designed to perform specifically in hospital patient rooms, the HACB20 comes equipped with a MERV 8 filter so no fibrous materials are in contact with the air stream.

HACB20





The Luxton-Reed Center
47 Westfield Industrial Park Road
Westfield, Massachusetts 01085

(413) 564-5657
info@dadanco.com

 Dadanco

 DadancoHVAC

 Dadanco

WWW.DADANCO.COM

